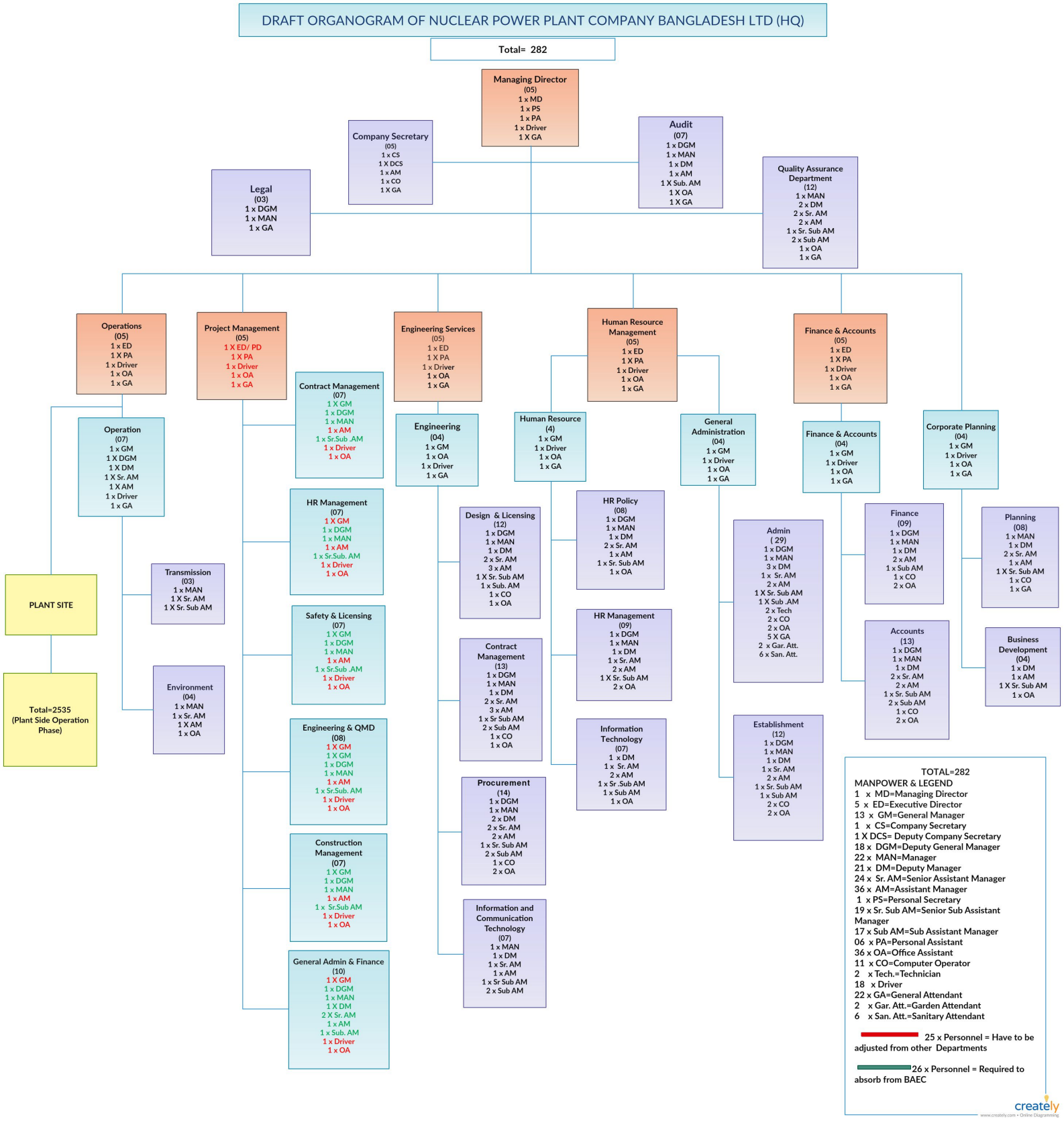


DRAFT ORGANOGRAM OF NUCLEAR POWER PLANT COMPANY BANGLADESH LTD (HQ)

Total= 282



TOTAL=282

MANPOWER & LEGEND

- 1 x MD=Managing Director
- 5 x ED=Executive Director
- 13 x GM=General Manager
- 1 x CS=Company Secretary
- 1 X DCS= Deputy Company Secretary
- 18 x DGM=Deputy General Manager
- 22 x MAN=Manager
- 21 x DM=Deputy Manager
- 24 x Sr. AM=Senior Assistant Manager
- 36 x AM=Assistant Manager
- 1 x PS=Personal Secretary
- 19 x Sr. Sub AM=Senior Sub Assistant Manager
- 17 x Sub AM=Sub Assistant Manager
- 06 x PA=Personal Assistant
- 36 x OA=Office Assistant
- 11 x CO=Computer Operator
- 2 x Tech.=Technician
- 18 x Driver
- 22 x GA=General Attendant
- 2 x Gar. Att.=Garden Attendant
- 6 x San. Att.=Sanitary Attendant

25 x Personnel = Have to be adjusted from other Departments

26 x Personnel = Required to absorb from BAEC